



**ABOVE ALL**

[www.AboveAllLighting.com](http://www.AboveAllLighting.com)



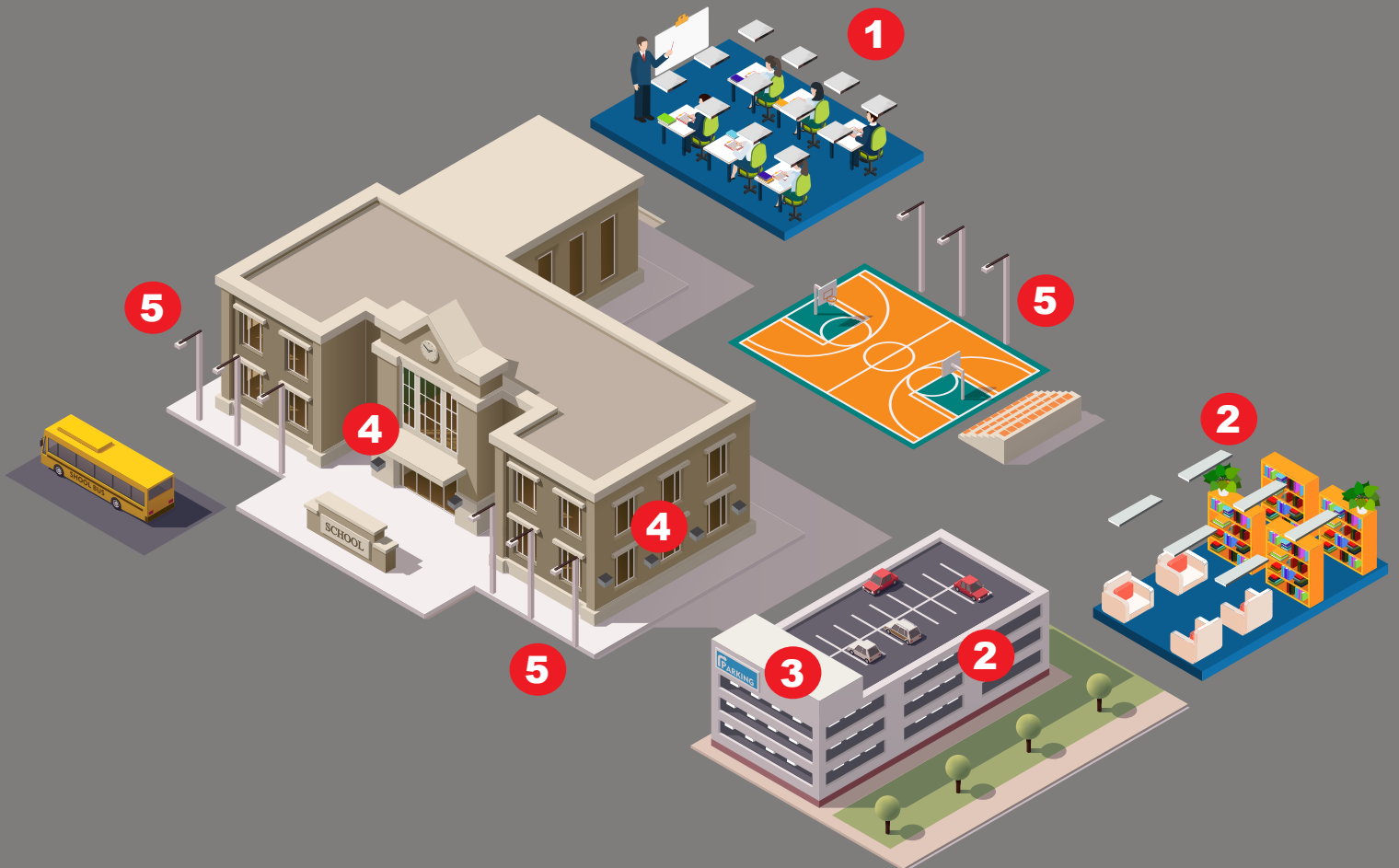
## **Education Solution**

Troffer | Troffer Retroffer Kit | Flat Panel | LED Strip | Vapor Tight |  
Wall Pack | Security Light | LED Parking Garages | Area Light | Post  
Top | Bollard

# START **SAVING**

Our comprehensive suite of lighting offerings include:

- 1** LED Troffer/ LED Troffer Retrofit Kit/ LED Flat Panel
- 2** LED Strip/ Vapor Tight
- 3** LED Parking Garages
- 4** LED Wall Pack/ Security Light
- 5** LED Area Light / Post Top / Bollard



## LED Troffer / LED Flat Panel / LED Troffer Retrofit Kit

1



LED Center Basket Troffer



LED Flat Panel



LED Troffer Retrofit Kit-DL 2x2



LED Troffer Retrofit Kit-DL 2x4



LED Linear Strip Retrofit Kit



## LED Strip

2



VISION LED Strip Light



LED STD Strip



VISION LED Strip Light



## LED Parking Garages & Canopy

3



LS Garage Light



Moon Series Garage Fixture

## LED Wall Pack

4



V-Line Wall Pack



Leopard Series Mini Wall Pack

## Security Light

4



LED TR Security Light



LED Security Light





## LED Area Light / Post Top / Bollard

5



Led Moon Series Post Top



Pavilion Led Post Top



MT LED Area Light 100W  
150W 200W



SMT LED Area Light



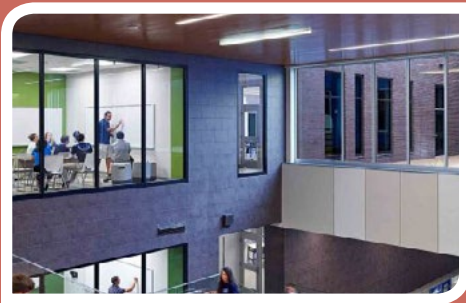
Sky Light



Standard LED Bollards

# SAVING EXAMPLE

Ref#: AB10447-19425



## Energy Savings:

At \$0.10 per kWh, energy savings is estimated at \$90 per fixture, based on saving approximately 200 Watts per fixture for 12 hours per day. If your facility has 48 outdoor fixtures (conservative for many retail establishments), this annualized savings would be \$4,320.



## Maintenance Savings:

The average cost to maintain a typical outdoor fixture is \$100 (lamp cost + labor/trip charge). This does not factor in any inconveniences or service interruptions caused by unlit areas. Over the extended 100,000 space rated life of an LED fixture compared with an HID lamp, this saves approximately \$500 per fixture in labor.  $48 \text{ fixtures} \times \$500 = \$24,000$ .

**ABOVE ALL Lighting, Inc.**

**Add:** 1501 Industrial Way N. Toms River, NJ 08755

**Phone:** 866-222-8866

**Web:** [www.AboveAllLighting.com](http://www.AboveAllLighting.com)

©2019 ABOVE ALL all rights reserved